

CATCHING LIVE BAIT

PRESENTED BY
CHRIS LINDSAY



FITEC
INTERNATIONAL

SPRING
2024

**PRODUCT
CATALOG**



Contents to Discuss

Introduction

Why Live Bait

Choosing a Cast Net

Cast nets I use

Preferred Method of Throw

Q & A

Intro

- When/where started fishing
- Family Fishing/HISBounty
- Striper fishing at SML
- How long live bait fished
- SMSC Member
- Striper Mafia
- Fitec
- Links:

[HIS Bounty – YouTube](#)

[Facebook](#)

[HIS Bounty \(@hisbounty\) • Instagram photos and videos](#)

[Cast Nets by Fitec - The Best-Selling Cast Nets in America!](#)

[WindRider Official Site - WindRider For Life Outdoors](#)





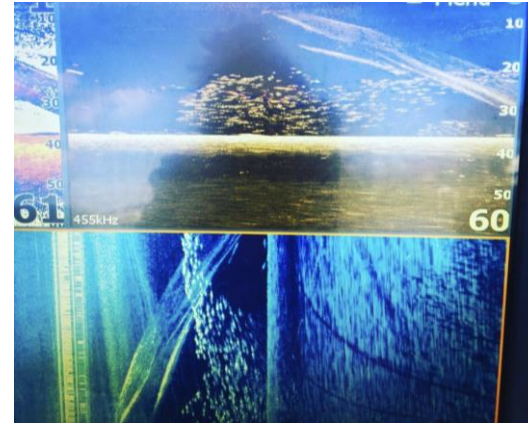
Why Live Bait

- Catch big fish (Big Bait = Big Fish)
- Catch lots of different fish
- Catching bait is fun (at times)
- The whole family/everyone on the boat is involved



Choosing A Cast Net

- Factors to Consider:
 - Water Temp
 - Bait depth
 - Target bait size
 - What size net can I throw
 - What weight net
 - Tape or Non-tape net



Cast Nets for Striper Bait at Smith Mountain Lake, VA

Radius, Mesh Size, Weight, Handline	Taped (Y/N)	Target Bait Size	Target Bait Depth	Comments
10' radius, 5/8" mesh, 1.5lbs / ft, 30' handline	N	bigger bait, 6" and up	bait holding 0-18' deep	<i>"my go-to size because I prefer larger bait"</i>
8-10' Radius, 1/2" mesh, 1- .5lb/ft, 30' handline	N	Medium bait, 4-7"	Bait holding 0-18' deep if thicker and/or slower in cold water	<i>"I would go with 10' 1/2" mesh 1.5lb if I only had one net"</i>
8-10' Radius 3/8" mesh, 1-1.5lb/ft, 30' handline	N	Good for alewives, bluebacks, threadfin shad	Good to use around lights where bait is concentrated	<i>"Avoid larger mesh; it 'gills & kills' smaller bait and wastes time"</i>
Taped Net 10' Radius, 5/8" mesh, 1.5lb / ft, 50' handline.	Y	For winter and deep bait	best when bait is still active and water temps from 40-50 degrees	<i>"This net sinks a little faster than a 1lb per foot Tape net"</i>
Taped Net 10' Radius, 5/8" mesh, 1.0lb / ft, 50' handline.	Y	For winter in coldest water (35- 45) and slow bait	Best when bait is slow and deep and can't outrun the net.	<i>"1lb per foot will stay open longer than 1.5lb in deeper depths"</i>
10' radius, 1" mesh, 1.5lb / ft 26' handline.	N	Deep & fast bigger bait.	Good for late fall / early spring, water temps are upper 40's - low 50's.	<i>"Net sinks like a rock - at times out catches the tape nets on deep bait. For when bait is fast but hasn't moved up shallow yet"</i>

Preferred Method of Throwing

- The Dry No Mouth Method

<https://www.youtube.com/watch?v=l1cKbEHJsNg>



Facebook

Instagram



YouTube



QUESTIONS ?

